



The Apex

Uxbridge, UB8 1RG



The Apex Uxbridge, UB8 1RG

About The Apex and Inquilab Housing Association

The Apex at Bakers Road, Uxbridge, is a development of 37 Shared Ownership apartments ranging in size from 1-3 bedrooms served by 2 lifts with many featuring Winter Gardens and Balconies built by Inquilab Housing Association.

Uxbridge in the London Borough of Hillingdon has 2 Shopping Malls, a Gym and a Cinema along with many other local amenities. Uxbridge also has excellent schooling, Universities and recreational facilities making it a popular location for families. Uxbridge is also a vibrant commercial area, hosting many internationally recognised companies such as Coca Cola, which bases its European Headquarters locally to take advantage of Uxbridge's proximity to London Heathrow, the world's busiest airport and the excellent local infrastructure.

Inquilab was first registered as a Housing Association in 1987. Inquilab have years of experience creating homes for people and are committed to providing affordable home ownership schemes across West London and Slough. They are a developing association and Registered Partner with the Greater London Authority.

Inquilab pride themselves on building good quality homes whilst maintaining a high level of Customer Care and Satisfaction. They evolved rapidly, building a strong financial base on which to develop new homes, deliver excellent performance and provide support services.

They were awarded the Customer Service Excellence, Investors in People Gold 2018 and Diversity Champion Not-For-Profit 2017 Accolades.

Specification:

Kitchen & Appliances

High Gloss Handleless kitchen units with soft close doors/drawers

Quartz worktops

Full range of Smeg *integrated appliances* including:

Fridge/Freezer

Washer/Dryer

Slimline Dishwasher

Electric Hob

Fan assisted Oven

Extractor Hood

Bathroom

Acrylic Bath with fixed showerhead

Glass hinged bath shower screen

White Sanitaryware

WC

Chrome Towel Rail

Shaver Socket

Heating & Electrical

Electric heating throughout

Flooring & Décor

Entrance, Bathroom, kitchen/lounge,

Carpeted Bedrooms

Walls finished in Egyptian Cotton.

Other Information

Solar Film on external windows

Code 4 Sustainable Homes

BLP 12 Year Warranty

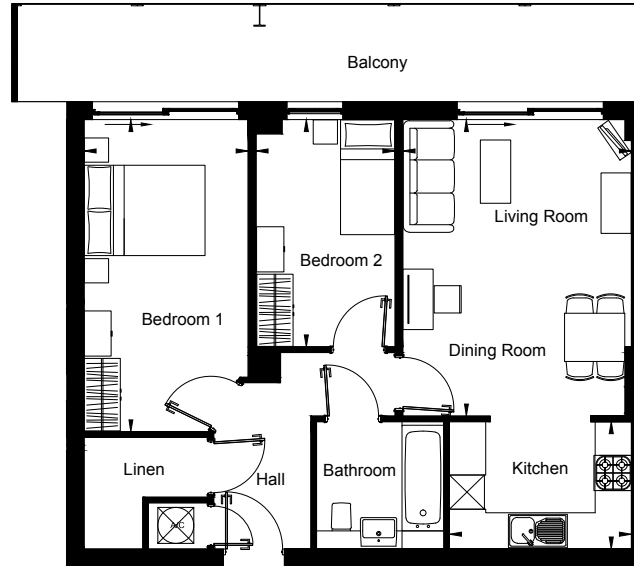
Winter Gardens to selected apartments

Video Entry Phone System

Large Decked Roof Garden and Planting

Floor Plans

Measurements are approximate. Not to Scale.
For Illustrative purposes only



Plots 1, 6, 11, 16, 21, 26 & 31

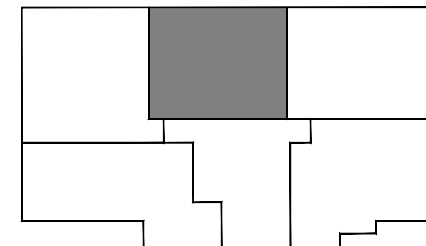
64.3 sq m (692 sq ft)

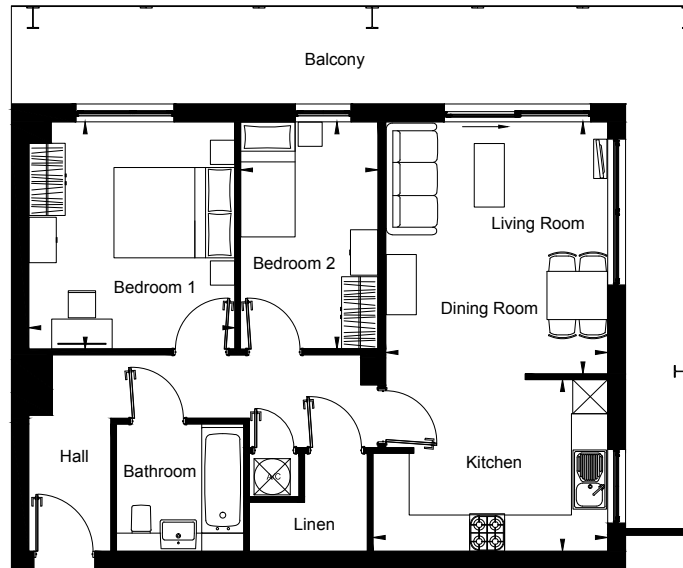
Living / Dining 4.91 x 3.78 (16'1 x 12'5)

Kitchen 3.01 x 2.11 (9'11 x 6'11)

Bedroom 1 5.17 x 2.71 (17'0 x 8'11)

Bedroom 2 3.76 x 2.30 (12'4 x 7'7)





Plots 2, 7, 12, 17, 22, 27 & 32

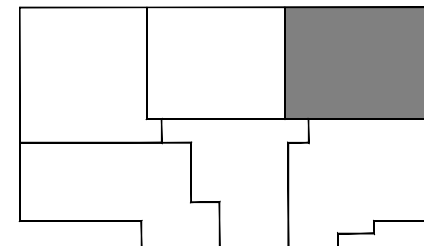
67.9 sq m (731 sq ft)

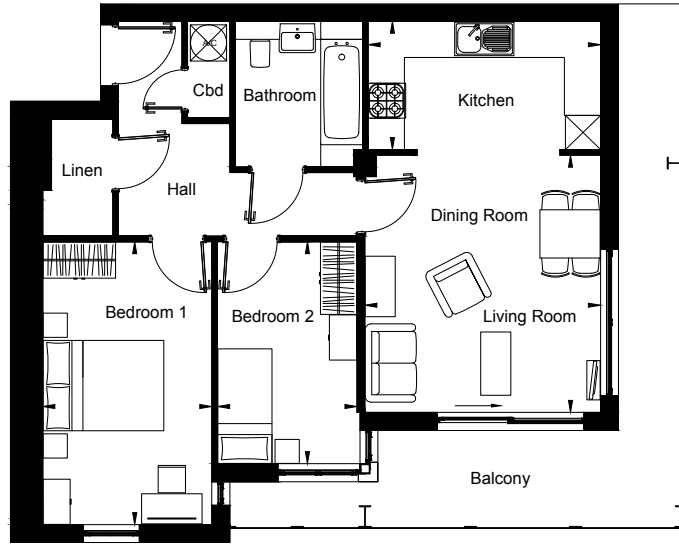
Living / Dining 4.17 x 3.67(13'8 x 12'0)

Kitchen 3.89 x 2.84(12'9 x 9'4)

Bedroom 1 3.76 x 3.41(12'4 x 11'2)

Bedroom 2 3.76 x 2.28(12'4 x 7'6)





Plots 3, 8, 13, 18, 23, 28 & 33

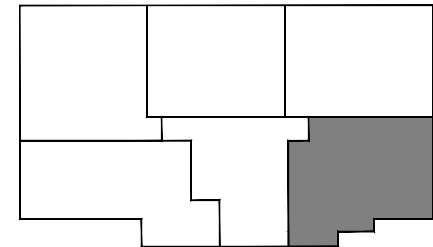
65 sq m (700 sq ft)

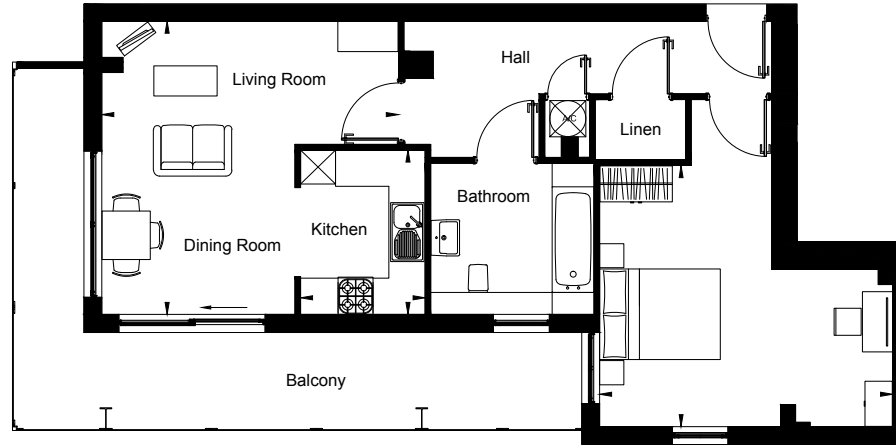
Living / Dining 4.26 x 3.90(14'0 x 12'10)

Kitchen 3.85 x 2.12(12'8 x 6'11)

Bedroom 1 3.68 x 2.31(12'1 x 7'7)

Bedroom 2 4.69 x 2.80(15'5 x 9'2)





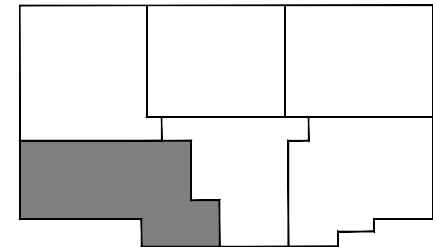
Plots 4, 9, 14, 19, 24 & 29

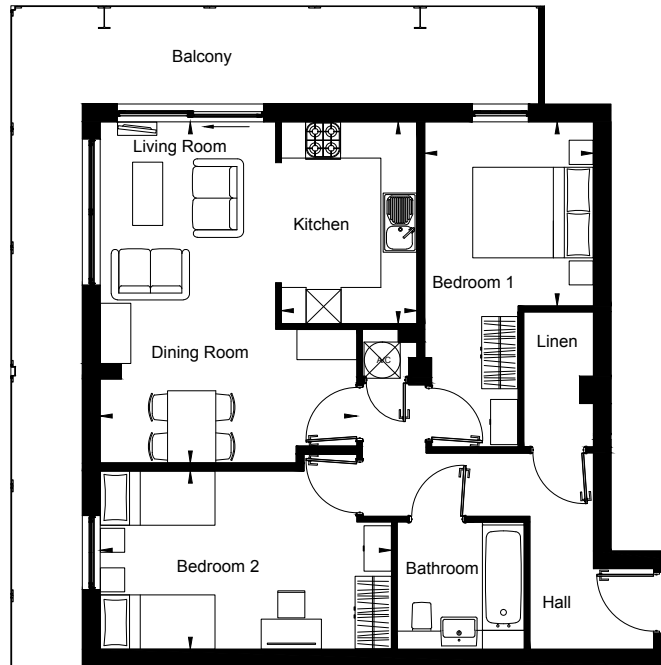
64.4 sq m (693 sq ft)

Living / Dining 4.91 x 4.86 (16'1 x 15'11)

Kitchen 2.72 x 2.05 (8'11 x 6'9)

Bedroom 4.86 x 4.33 (15'11 x 14'3)





Plots 5, 10, 15, 20, 25 & 30

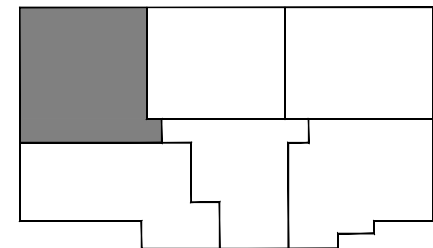
72.9 sq m (785 sq ft)

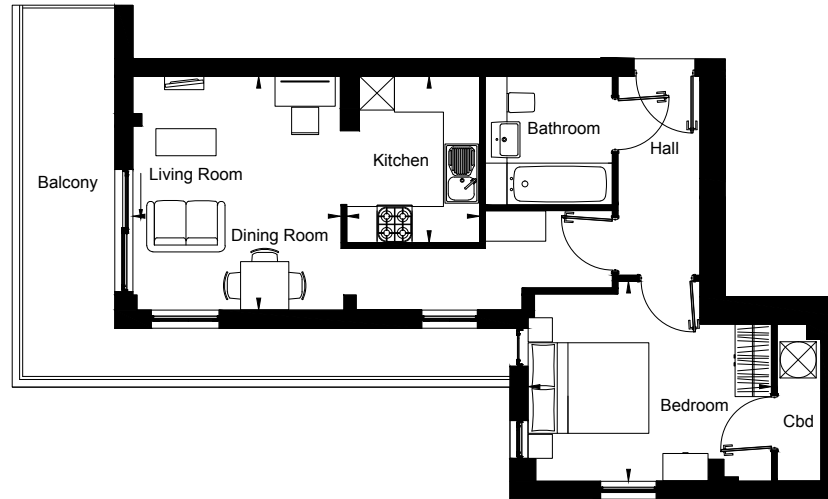
Living / Dining 5.65 x 4.25 (18'6 x 13'11)

Kitchen 3.34 x 2.25 (10'11 x 7'5)

Bedroom 1 3.05 x 2.79 (10'0 x 9'2)

Bedroom 2 4.82 x 2.96 (15'10 x 9'9)





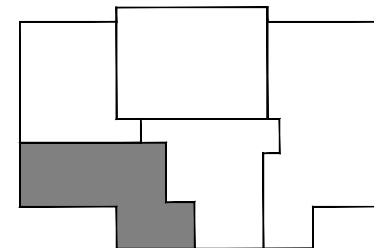
Plots 34

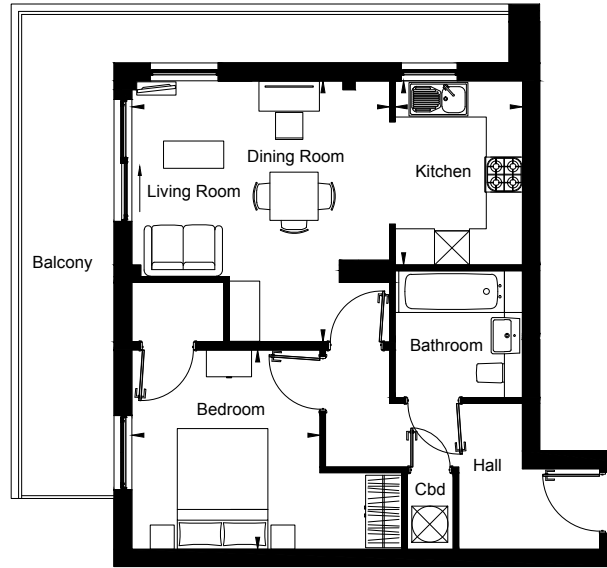
49.6 sq m (534 sq ft)

Living / Dining 3.88 x 3.44 (12'9 x 11'3)

Kitchen 2.76 x 2.20 (9'1 x 7'3)

Bedroom 4.04 x 3.32 (13'3 x 10'11)





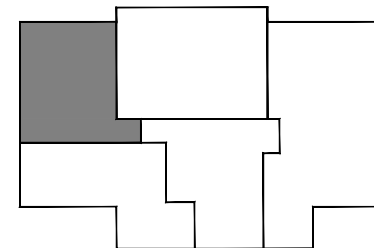
Plots 35

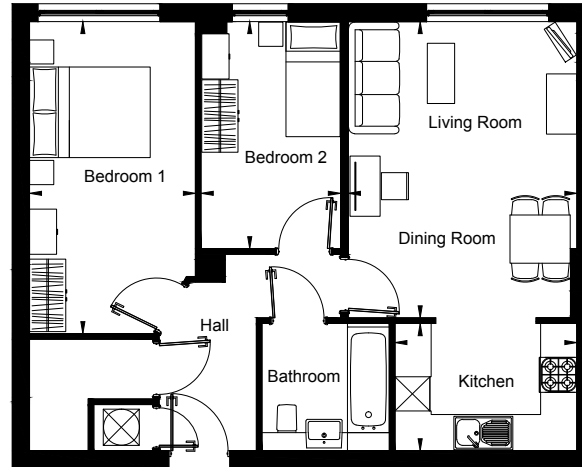
51.8 sq m (557 sq ft)

Living / Dining 4.33 x 4.27 (14'2 x 14'0)

Kitchen 3.05 x 2.11 (10'0 x 6'11)

Bedroom 3.30 x 3.12 (10'10 x 10'3)

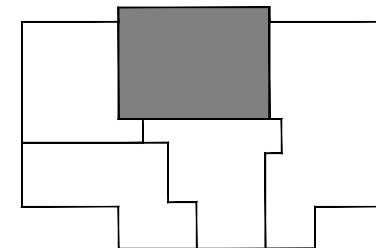


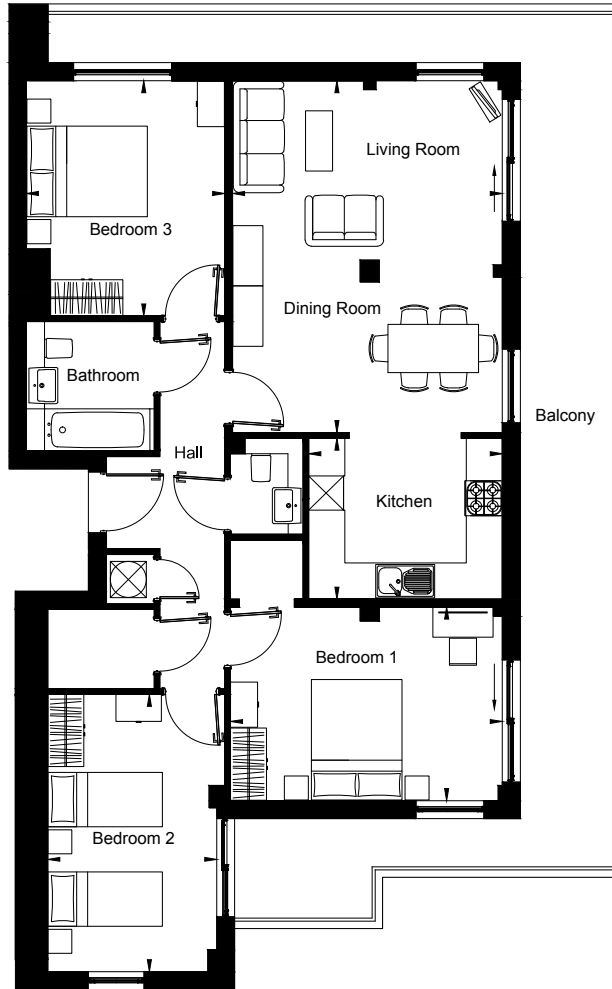


Plots 36

64.1 sq m (690 sq ft)

Living / Dining	4.91 x 3.78 (16'1 x 12'5)
Kitchen	3.01 x 2.11 (9'11 x 6'11)
Bedroom 1	5.17 x 2.75 (17'0 x 9'0)
Bedroom 2	3.76 x 2.31 (12'4 x 7'7)

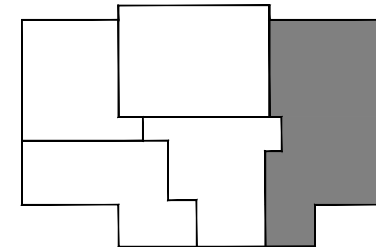




Plots 37

97 sq m (1044 sq ft)

Living / Dining	5.83 x 4.47 (19'2 x 14'8)
Kitchen	3.21 x 2.66 (10'6 x 8'9)
Bedroom 1	4.51 x 3.21 (14'10 x 10'6)
Bedroom 2	4.60 x 2.80 (15'1 x 9'2)
Bedroom 3	3.90 x 3.29 (12'10 x 10'10)



The Area

Local Schools, Colleges and Universities:

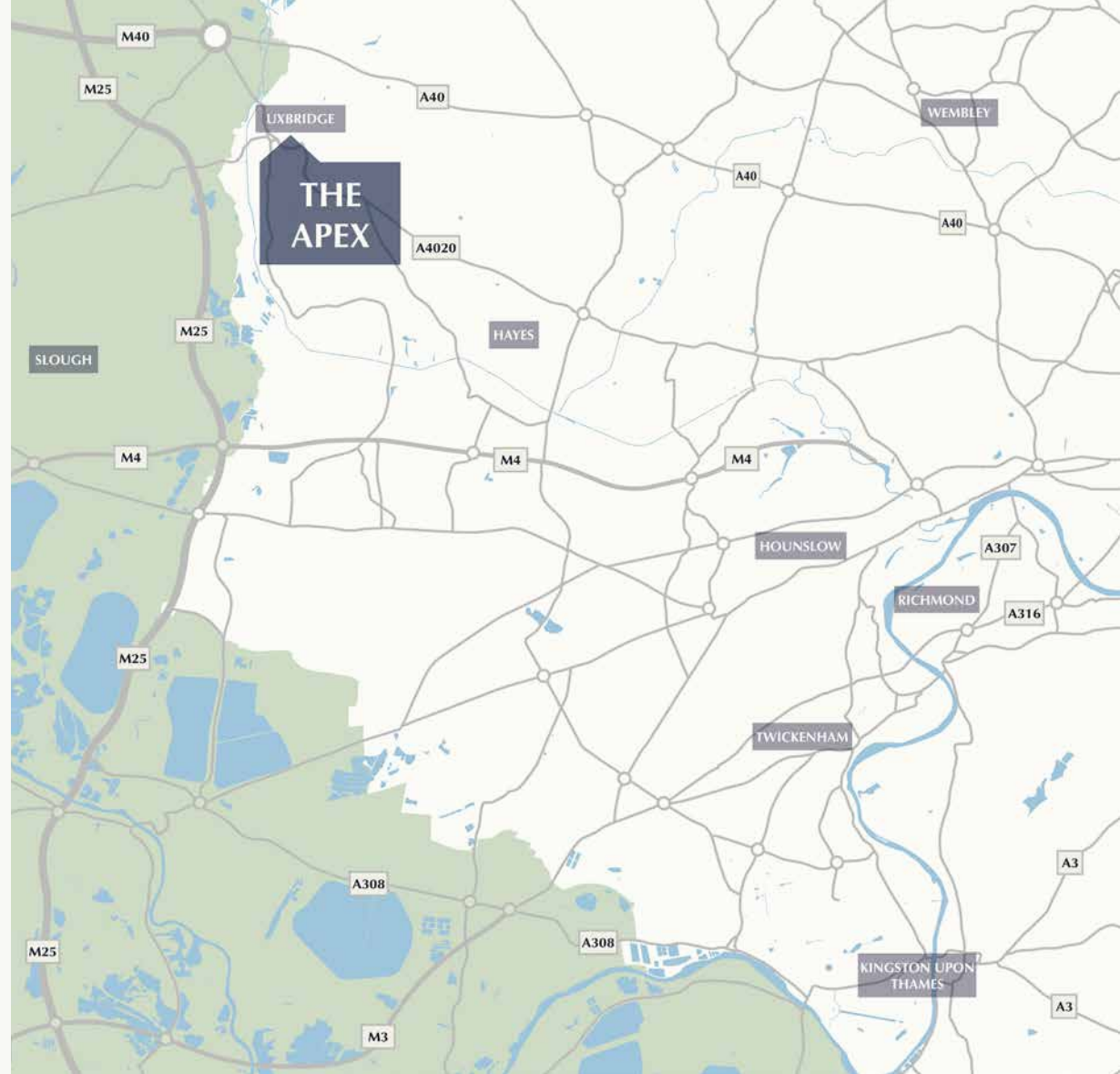
- Hermitage Primary School - 0.3 miles away
- St Andrew's CofE Primary School - 0.3 miles away
- Bucks New University – Uxbridge Campus – 0.3 Miles Away
- St Mary's Catholic Primary School - 0.4 miles away
- Uxbridge College – 0.6 Miles Away
- Uxbridge High School - 0.7 miles away
- ACS Hillingdon International School - 0.8 miles away
- St Helens College – 1.2 Miles Away
- Brunel University – 1.5 Miles Away

Transport Links:

- Uxbridge Underground Station - 0.0 miles away
- Uxbridge Bus Station 0.0 Miles Away
- M40 - 1.6 miles away
- Heathrow Airport - 4.8 miles away
- The London Borough of Hillingdon will benefit from the High Speed 2 Railway line which is due to be completed by 2026 for Phase 1 to Birmingham with the rest due to be completed by the end of 2033 to Manchester.

Local Amenities:

- Uxbridge Town Centre – 0.1 miles away
- Hillingdon Sports and Leisure Complex – 0.7 miles away
- Uxbridge Common – 1.0 mile away
- Hillingdon Hospital – 2.0 Miles away



Goodfellows Estate Agents
10, Axis Centre,
Cleeve Road,
Leatherhead,
Surrey, KT22 7RD

Disclaimer:

Whilst every effort has been made to ensure that the information in this brochure is correct, it is designed specifically as a guide and Goldeneye Commercial Ltd reserves the right to amend the specification as necessary and without notice. Internal images used, are Reflective of the style of the apartments and are for marketing purposes only; to show the quality of product and do not constitute or form any part of the specification contained herein or in any other promotional material relating to this development or any other. This does not constitute or form any part of contract or sale. All parties wishing to purchase must meet with a mortgage advisor from Embrace Mortgage Services prior to reservation in order to verify the ability to purchase of each individual, without exception. Please note that until such time as contracts have been unconditionally exchanged, the developer and agent reserve the right to withdraw from marketing, August 2017.